

# IMD-2002 Quick Start Guide

Version 1.0 - 2023-09-14



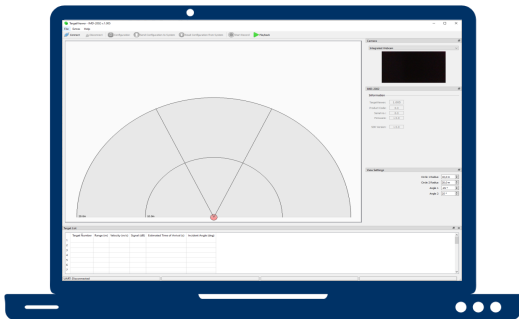
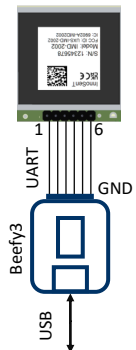
## 1. INSTALL IMD-2002 TargetViewer

With the TargetViewer, quick and easy evaluation of the IMD-2002 is possible.

Download the latest IMD-2002 Software Package at [InnoSent Download Portal](#).

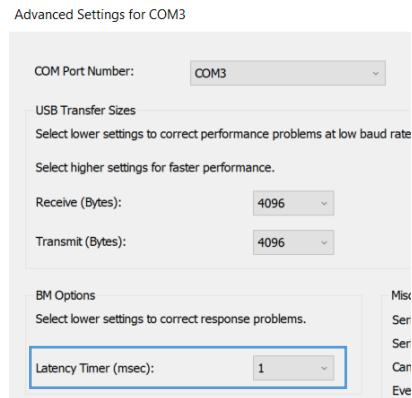
For a more detailed explanation, please see User Manual or Data Sheet.

## 2. SETUP CABLE CONNECTION

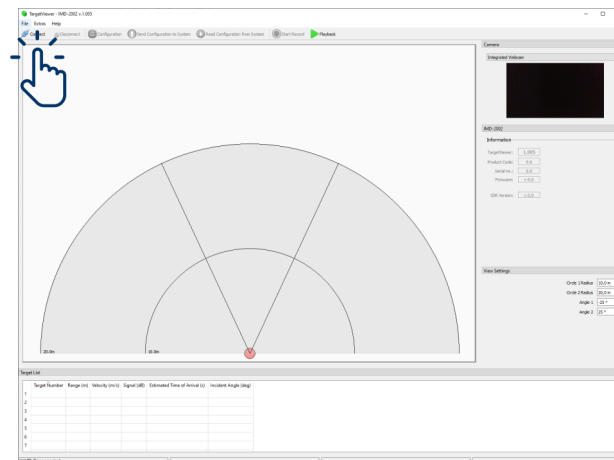


## 3. SETUP CONNECTION

Configure cable latency in Windows device manager to 1ms (default 16ms).



Click the 'connect' button in the top left corner and choose the correct COM port.



## 4. OBSERVE MOVING DETECTIONS

Detections are output in a target list via UART.

Detailed information about a target is displayed in the target list in the lower area of the GUI.

Red indicates targets moving toward the sensor (approaching).

Green indicates targets moving away from the sensor (receding).

The detector is set up properly and ready for operation

Target Number	Range (m)	Velocity (m/s)	Signal (dB)	Estimated Time of Arrival (s)	Incident Angle (deg)
0	2,00144	0,150237	75,3303	13,3219	2
1	0,250572	-0,150237	73,0194	-1,66784	-20

